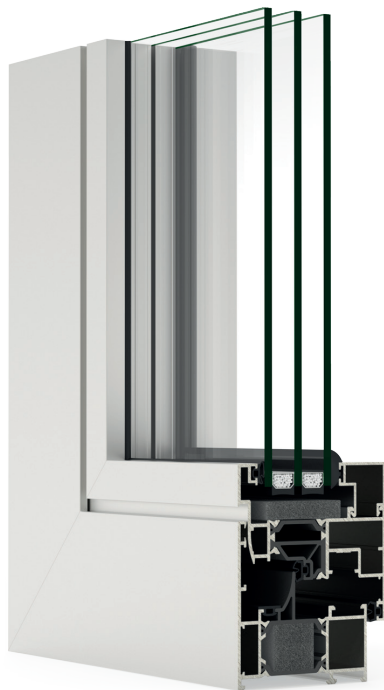


DATASHEET



COR70 EVOLUTION (Half Hidden Sash)



ENERGY EFFICIENCY	Uf \geq 0,9 (W/m ² K) Consult typology, dimension and glass	Thermal Transmission Coefficient
ACCOUSTIC INSULATION	63 mm Rw = 43 dB	Maximum glazing Maximum acoustic insulation
CATEGORIES ACHIEVED AT TEST CENTRE	Class 4 Class E1500 Class C5 Reference test 1.23 x 1.48 m / 1 Sash.	Protection against atmospheric agents Air permeability (UNE-EN 12207) Water tightness (UNE-EN 12208) Wind resistance (UNE-EN 12210)
SECTIONS	70-232 mm Frame	80,5 - 88,5 mm Sash
MAXIMUM DIMENSIONS (by sash)	Width (L) = 1500 mm Height (H) = 2600 mm	
MAXIMUM WEIGHT SASH	150 Kg	
EXTRUSION ALLOY	6063 T-5 Profile thickness: 1,5 mm	
POLYAMIDE STRIP LENGTH	Polyamide 6.6 reinforced with 25% fiberglass: 30 - 35 mm	
GASKETS	EPDM Triple Gasket	
FOAMS	Perimeter polyolefin foam in glazing rebate zone	
OPENING POSSIBILITIES	Side hung tilt & turn tilt only	
FINISHES	Colour powder coating (RAL, mottled, rough...) According to Qualicoat >60 microns Wood effect powder coating (Qualideco standard) Anodized (According to Ewwa Euras) Optionally bicoloured	

Air permeability
(UNE-EN 12207):
Class
4

Wind resistance
(UNE-EN 12210):
Class
C5

Water tightness
(UNE-EN 12208):
Class
E1500